



KODAK Easy Lens

Easy Fit for Easy Viewing

KODAK Easy Lens is a well-balanced, first progressive for easy dispensing and patient adaptation.



KODAK Lens

Well-Balanced Design

KODAK Easy Lens is a soft-design progressive with well-defined viewing zones to facilitate new presbyope training (see mean plot below).

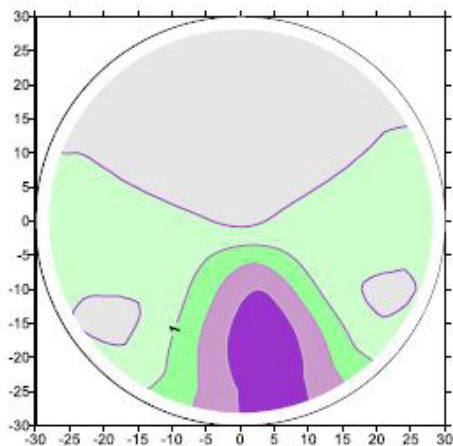
The design includes a generous reading zone and reduced astigmatism in the lateral sides for easy adaptation (cylinder plot).

KODAK Easy Lens includes 2 corridor lengths to cover most frame sizes:

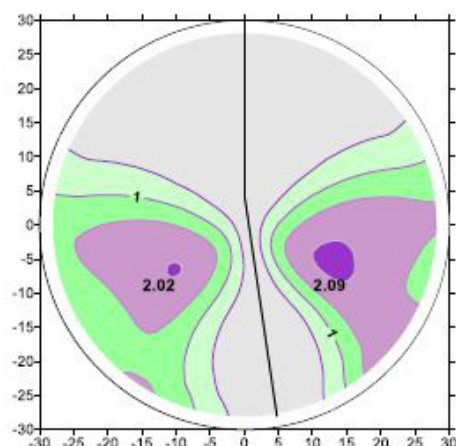
- KODAK Easy Lens 18
- KODAK Easy Lens 14

Always provide a progressive reading card for your patient to practice proper head and eye movement. This will soon become second nature and the patient can enjoy clear vision at all distances.

KODAK Easy Mean Plot



KODAK Easy Cylinder Plot



KODAK Easy Lens

Availability

KODAK Easy Lens is available in clear, photochromic, polarized, and blue light options. Priced at introductory levels, KODAK Easy Lens makes a great choice for tight budgets and entry level insurance plans.

Lens Material	Index	Colors
Clear	1.50, Poly, Trivex®, 1.60, and 1.67	
Transitions®	1.50, Poly, and 1.67	Gray/Brown
	1.50, Poly, and 1.67	Style Colors
Transitions XTRActive®	1.50, Poly, and 1.67	Gray/Brown
Polarized	1.50 and Poly	Gray/Brown
KODAK Total Blue® Lens*	Poly and 1.67	
KODAK UVBlue™ Lens**	1.50, Poly, and 1.67	

All KODAK Easy Lens materials are compatible with Crizal® and KODAK Anti-Reflective Lens coatings. Always recommend a non-glare treatment to ensure the patient experiences crisp, clear vision, and better looking eyewear.

For patients that report discomfort from indoor lighting or screen glare, offer a blue-violet filtering option: premium KODAK Total Blue Lens or everyday KODAK UVBlue Lens.

* KODAK Total Blue Lens is a premium hybrid solution that includes AR and filters up to 80% of natural and artificial blue-violet light between 380-440nm wavelengths indoors and outdoors.

** KODAK UVBlue Lens is a clear lens that filters up to 3x more blue-violet light than regular prescription lenses. Compatible with the AR of your choice.

In Summary:

KODAK Easy Lens is a great introductory progressive for your portfolio. It includes:

- Soft, balanced progressive design for easy dispensing and adaptation
- Attractive pricing for low budgets and private pay alternatives
- Entry level insurance coverage
- Fixed 18 and 14mm corridor length options
- Clear, photochromic, polarized, and blue light lens options
- Compatible with any AR treatment

Use KODAK Easy Lens as a way to gain new patients that aren't covered by a vision plan or can't afford a premium progressive. Once they experience the benefits of a no-line progressive design, you can more easily upgrade them to advanced designs and show them the full benefits of digital designs.



**For product information, sales aids, or dispensing and patient materials call
800.830.3995 or visit:
www.KodakLens.us/pro | www.SALitOnline.com**